



Lomligor wind farm

Lomligor wind farm is an operating wind farm in Pak Phanang, Nakhon Si Thammarat Province, Thailand.

This article is part of the Global Wind Power Tracker, a Global Energy Monitor project.

[Report an error](#)

Project Details

Table 1: Phase-level project details for Lomligor wind farm

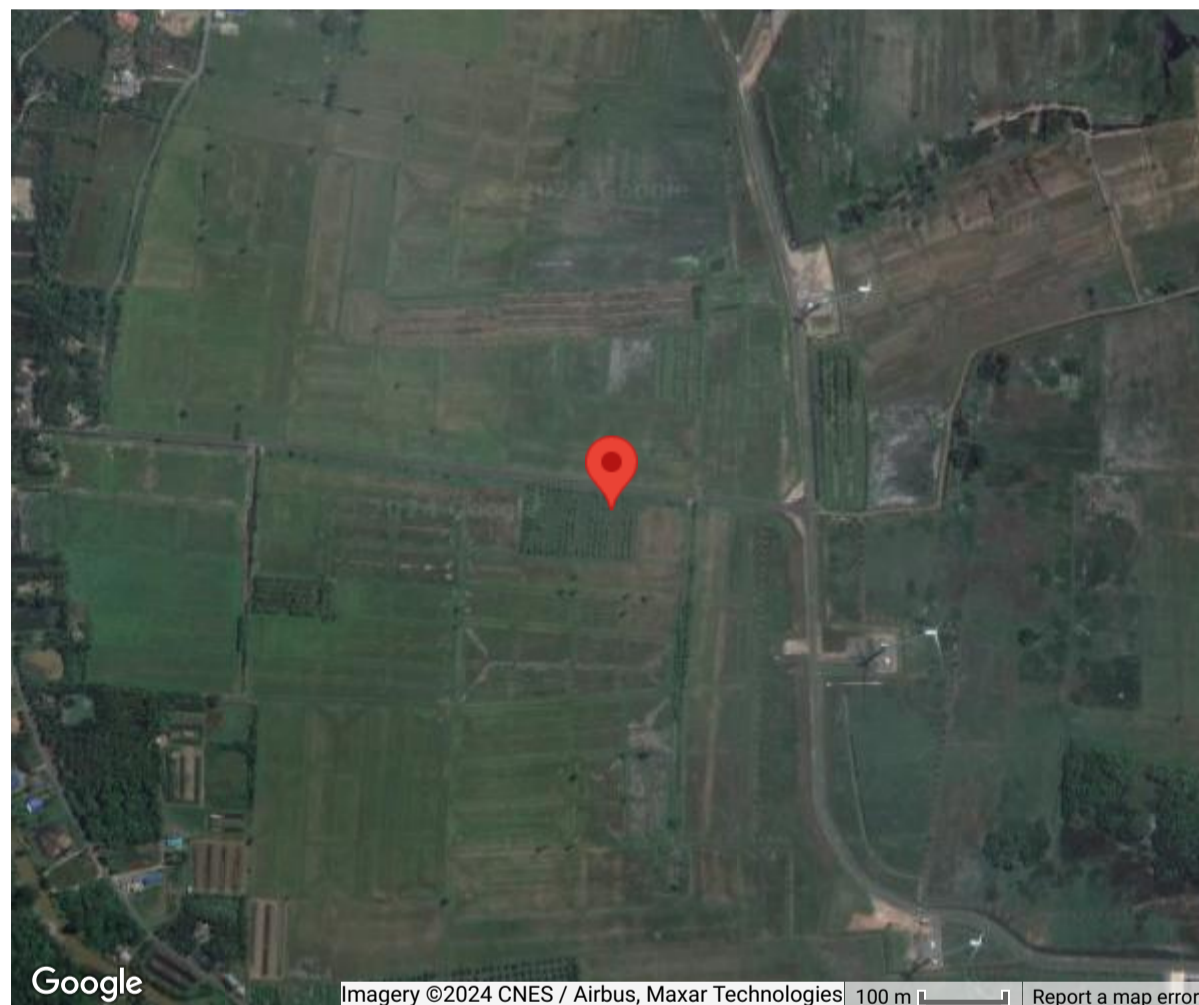
Status	Commissioning year	Nameplate capacity	Type	Owner	Operator
Operating ^[1]	2019 ^[1]	10 MW ^[1]	Onshore	BCPG Public Company LTD (BCPG) ^[1]	Lomligor Co. Ltd. ^[1]

Location

Table 2: Phase-level location details for Lomligor wind farm

Location	Coordinates (WGS 84)
Pak Phanang, Nakhon Si Thammarat Province, Thailand ^{[1][2]}	8.3017, 100.2379 (exact) ^[2]

The map below shows the exact location of the wind farm:



Articles and Resources

Additional data

To access additional data, including an interactive map of global wind farms, a downloadable dataset, and summary data, please visit the Global Wind Power Tracker on the Global Energy Monitor website.

References

- <https://www.bcpgroup.com/en/news-medias/news/249/bcpgs-lomligor-wind-farm-starts-commercial-operation-ahead-of-schedule-with-immediate-revenue-recognition>.
- https://www.thewindpower.net/windfarm_en_32362.php.

Retrieved from "https://www.gem.wiki/w/index.php?title=Lomligor_wind_farm&oldid=538696"

This page was last edited on 3 December 2023, at 01:51.

Content is available under Creative Commons Attribution-NonCommercial-ShareAlike unless otherwise noted.